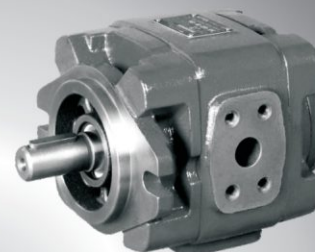


SUFON Type IGP 1,2,3



Features

- Low pulsation of oil flow
- Fixed displacement
- Low operating noise
- Due to sealing gap compensation high efficiency at low speed and viscosity
- Wide speed ranges, can operate up to 3000r/min
- Peak pressure up to 350 bar
- Options for double pumps

T

Ordering details

IGP		2	-40	-01T/	R	-V	P	C
------------	--	----------	------------	--------------	----------	-----------	----------	----------

Series		IGP
---------------	--	-----

Frame Sizes.	
8, 10, 13, 16, 20	1
25, 32, 40, 50, 63	2
80, 100, 125, 160	3

Flow cc/rev				
FS-1				
8	10	13	16	20
FS-2				
25	32	40	50	63
FS-3				
80	100	125	160	

Size	cc/rev
8	8.0
10	10.0
13	13.3
16	16.0
20	20.0
25	25.3
32	32.7
40	40.1
50	50.7
63	63.7
80	81.4
100	100.2
125	125.3
160	162.8

Mounting Flange	SAE 2 - hole mounting Flange	C
------------------------	------------------------------	---

Shaft versions	Parallel	P
	SAE - Spline Shaft	S

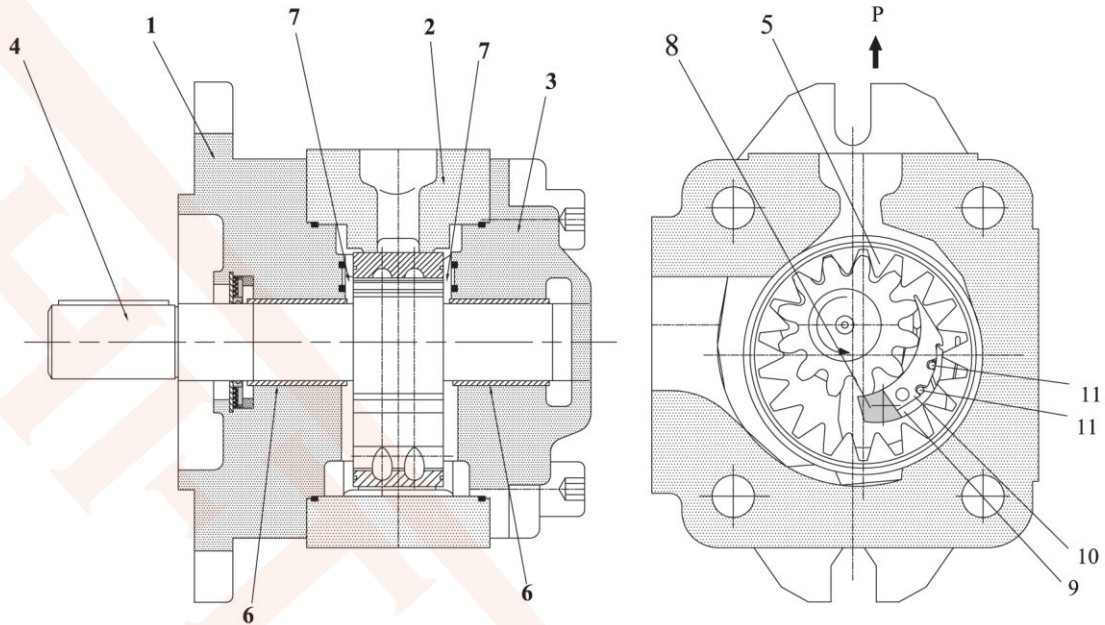
Seals	FKM Seals	V
--------------	-----------	---

Direction of rotation	(views on Shaft and clock wise)	R
------------------------------	---------------------------------	---

Series	01T
---------------	-----

HYDRAULIC GEAR PUMP

Section / function



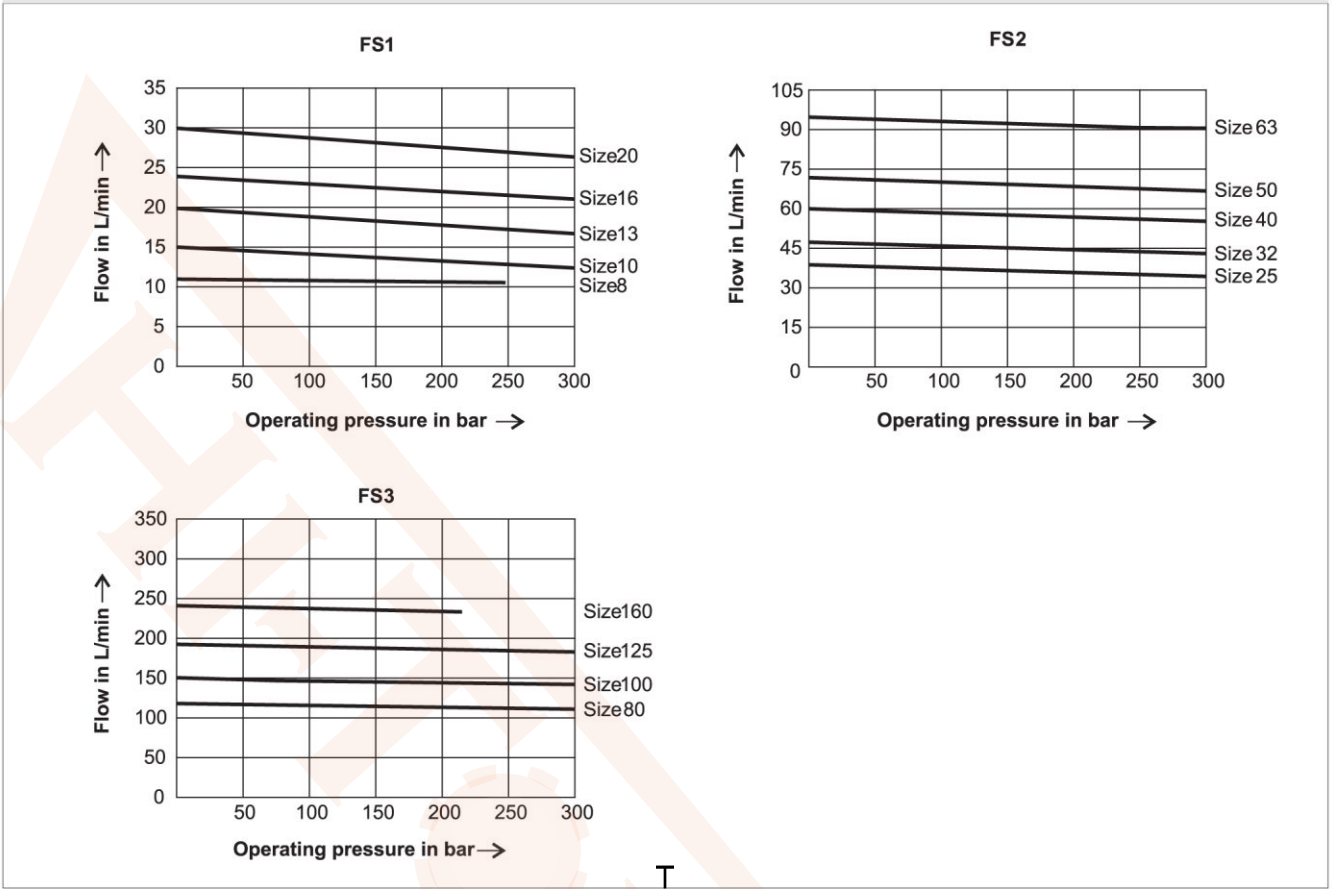
1. Front mounting flange 2. Gear housing 3. Blanking rear cover 4. Shaft
 5. Hollow Gear 6. Plain Bearing 7. Axial Disc 8. Stop Pin 9. Segment 10. Segment carrier 11. Sealing rolls

Technical data

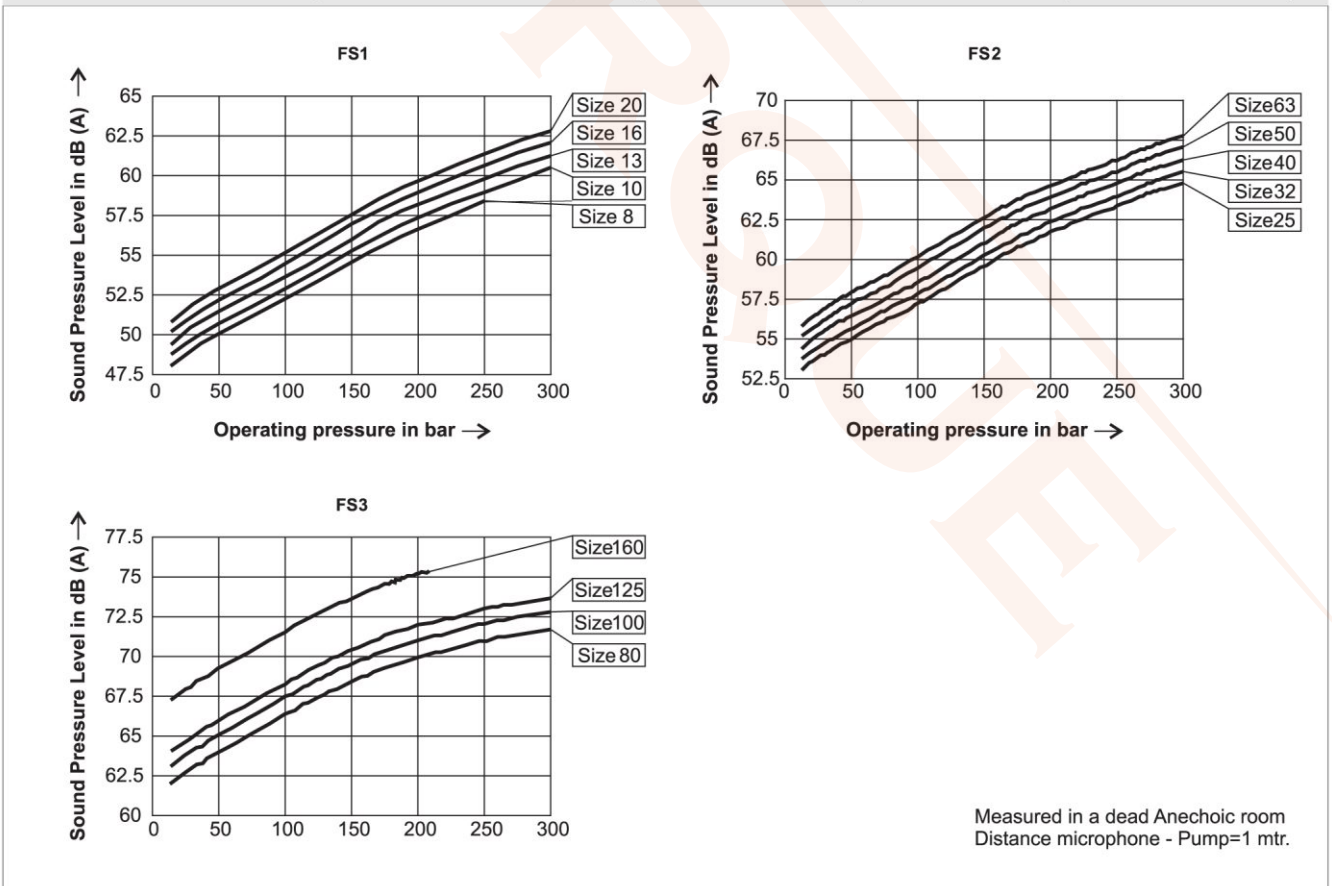
Series Frame Size	Flow code	cc/rev	Operating Pressure Bar		Rotation/speed range		Weight
			Continuos	Interminent	r/max	r/min	
IGP1	8	8.0	250	300	3000	600	4.4
	10	10.0					4.6
	13	13.3					4.9
	16	16.0					5.2
	20	20.0					5.6
IGP2	25	25.3	315		3000	200	14.5
	32	32.7					15
	40	40.1					16
	50	50.7					17
	63	63.7					18.5
IGP3	80	81.4	210	260			43.5
	100	100.2					45.5
	125	125.3					48
	160	162.8					52

HYDRAULIC GEAR PUMP

Characteristic curve - average values for frame size 1,2 & 3 (measured at $n = 1450 \text{ rpm}$, $v = 46 \text{ mm}^2/\text{s}$, $\text{temp}=50^\circ\text{C}$)



Sound Pressure Level - average values for frame size 1,2 & 3 (measured at $n = 1450 \text{ rpm}$, $v = 46 \text{ mm}^2/\text{s}$, $\text{temp} = 50^\circ\text{C}$, distance= 1mtr)

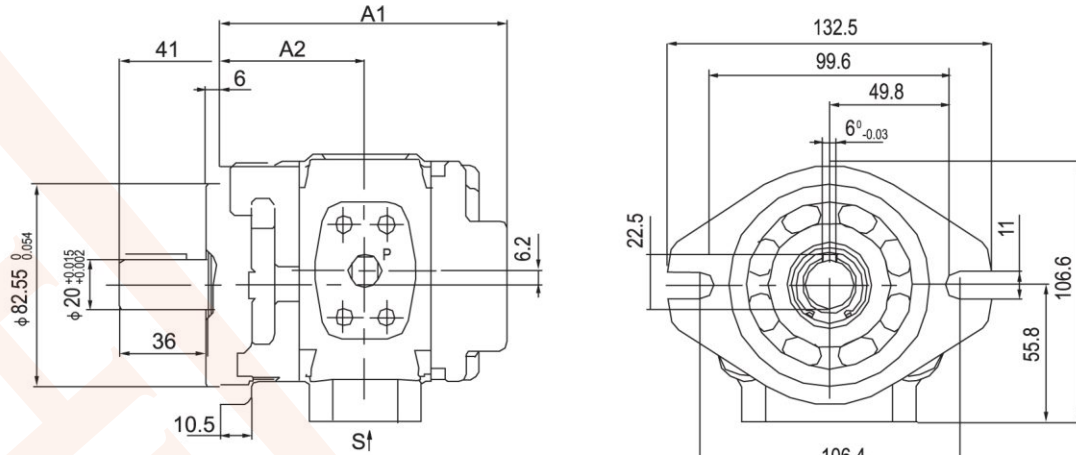


HYDRAULIC GEAR PUMP

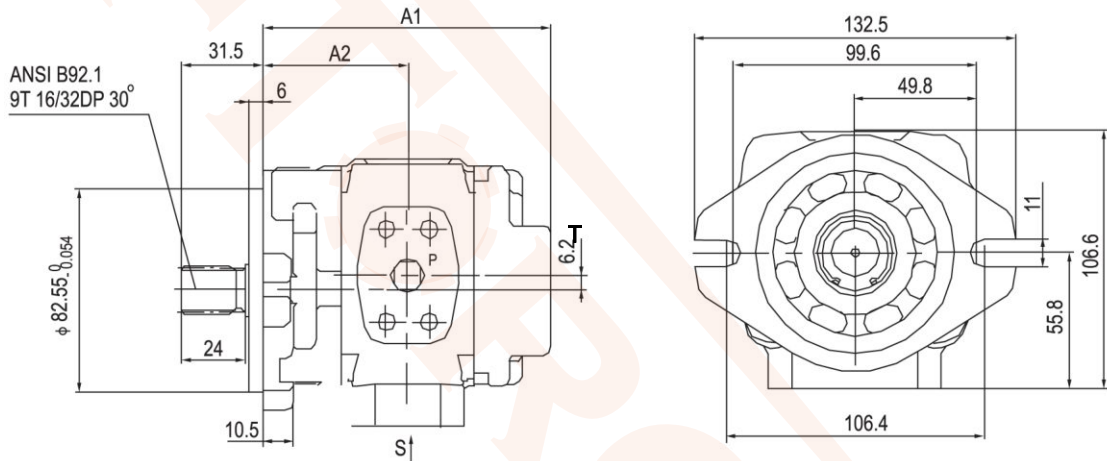
(dimensions in mm)

Unit Dimensions frame size- FS 1

IGP1-**-01T/R-VPC



IGP1-**-01T/R-VSC



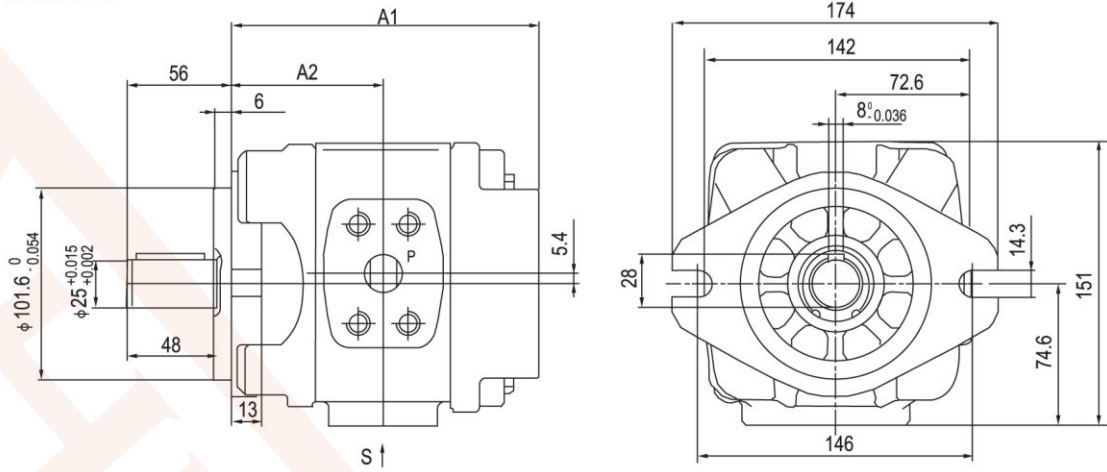
Description		Dimensions			
Code parallel shaft	Code spline shaft	A1	A2	S	P
IGP 1-8-01T/R-VPC	IGP 1-8-01T/R-VSC	107	54	$\phi 19$	$\phi 13$
IGP 1-10-01T/R-VPC	IGP 1-10-01T/R-VSC	111	56		
IGP 1-13-01T/R-VPC	IGP 1-13-01T/R-VSC	117.5	59.25		
IGP 1-16-01T/R-VPC	IGP 1-16-01T/R-VSC	123	62	$\phi 26$	$\phi 18$
IGP 1-20-01T/R-VPC	IGP 1-20-01T/R-VSC	131	66		

HYDRAULIC GEAR PUMP

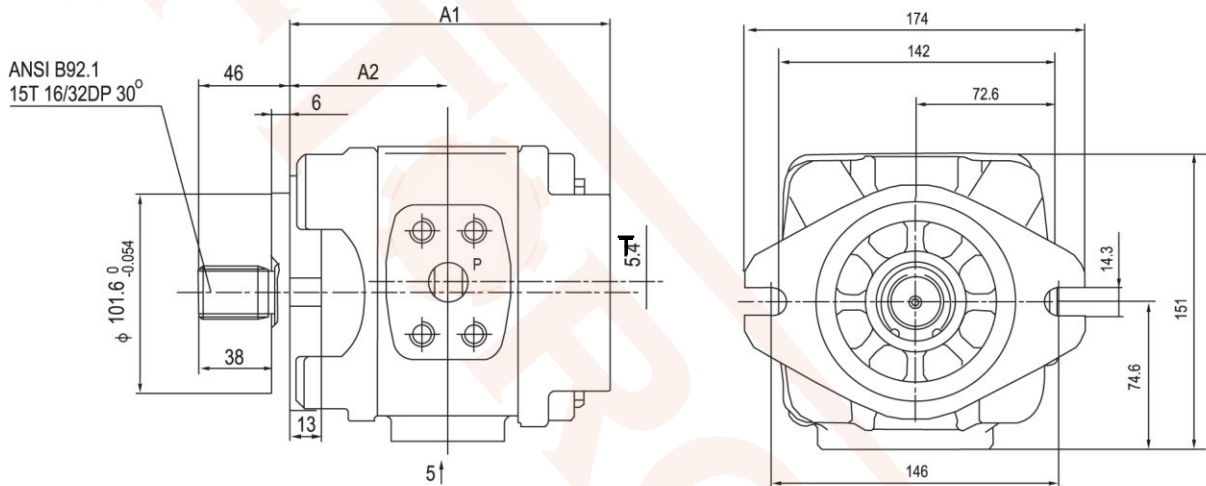
(dimensions in mm)

Unit Dimensions frame size- FS 2

IGP2-**-01T/R-VPC



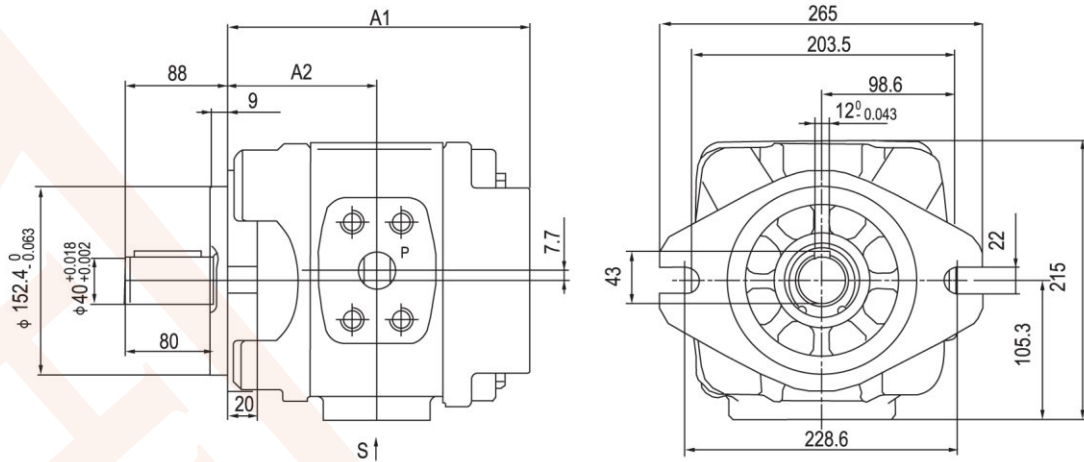
IGP2-**-01T/R-VSC



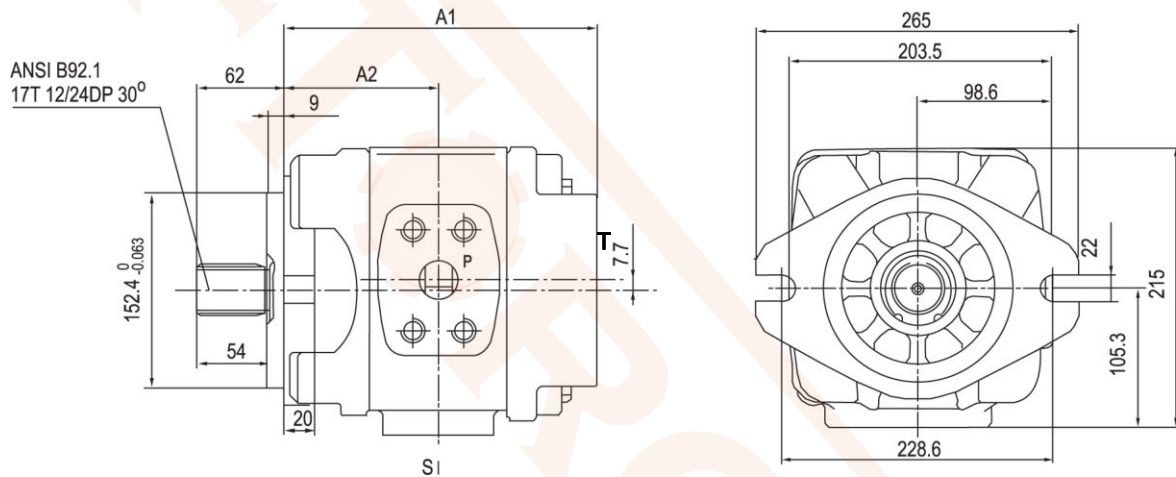
Description		Dimensions			
Code parallel shaft	Code spline shaft	A1	A2	S	P
IGP2-25-01T/R-VPC	IGP2-25-01T/R-VSC	139	73	$\phi 32$	$\phi 18$
IGP2-32-01T/R-VPC	IGP2-32-01T/R-VSC	146	76.5		
IGP2-40-01T/R-VPC	IGP2-40-01T/R-VSC	153	80	$\phi 32$	$\phi 20$
IGP2-50-01T/R-VPC	IGP2-50-01T/R-VSC	163	85		
IGP2-63-01T/R-VPC	IGP2-63-01T/R-VSC	177	92		

Unit Dimensions frame size- FS 3

IGP3-**-01T/R-VPC



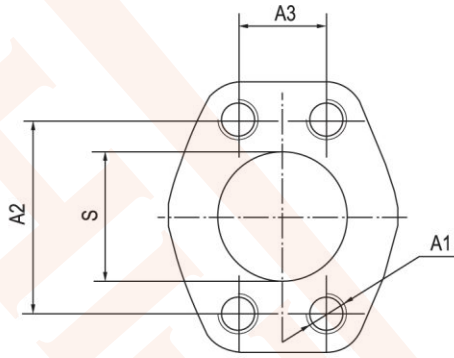
IGP3-**-01T/R-VSC



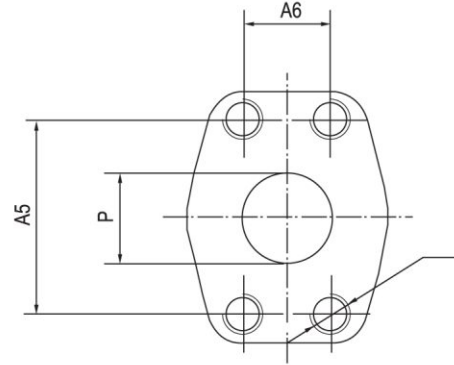
Description		Dimensions			
Code parallel shaft	Code spline shaft	A1	A2	S	P
IGP3 -80-01T/R-VPC	IGP '3-80-01T/R-VSC	204	109.5	$\phi 51$	$\phi 32$
IGP3-100-01T/R-VPC	IGP 3-100-01T/R-VSC	213	114	$\phi 51$	$\phi 32$
IGP3-125-01T/R-VPC	IGP 3-125-01T/R-VSC	225	120	$\phi 63.5$	$\phi 38$
IGP3-160-01T/R-VPC	IGP '3-160-01T/R-VSC	243	129	$\phi 76$	$\phi 38$

Ports Dimensions for- FS 1,2,3

Port Suction 'S'



Pressure Port 'P'



Ports details

Series	cc/rev	S	A1	A2	A3	P	A4	A5	A6		
IGP2	8	φ 19	M10 deep 15	47.6	22.2	φ 13	M8 deep 13	38.1	17.5		
	10										
	13										
	16										
	20	φ 26	58.7	30.2	φ 18	M10 deep 15	47.6	22.2			
IGP2	25	φ 32	M10 deep 17	58.7	30.2	φ 18	M10 deep 17	47.6	22.2		
	32										
	40					φ 20				52.4	26.2
	50										
	63										
IGP3	80	φ 50	M12 deep 20	77.8	42.9	φ 32	M12 deep 20	69.9	35.7		
	100										
	125	φ 63.5	88.9	50.8	φ 38	M16 deep 25	79.4	36.5			
	160	φ 76	106.4	61.9							

